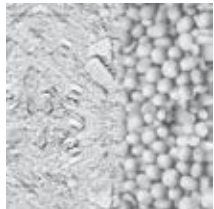


Environment

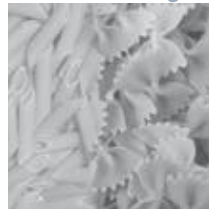
Animal Nutrition



Building Materials



Food Processing



# Mixing Solutions for Environmental Technology



As a result of decades of experience in the field of mixing technology, MAP® offers specifically developed solutions in the field of Environmental Technology.

The company's wide product range provides a suitable mixer for virtually every application. Trustful cooperation with leading international companies specialising in mechanical, chemical and biological waste water treatment has greatly contributed to the definition of a specific quality standard for this industry.

The range includes single-shaft ploughshare and shovel-tool mixers, ribbon blenders, twin-shaft ribbon or paddle mixers as batch-type or continuous mixers for large scale production, as well as particularly versatile laboratory mixing equipment.

MAP® mixers are not only innovative but also attractively priced, tailored to the specific needs of customers from the industry.

MAP® is a member of WAMGROUP® - global leader in bulk solids handling and processing equipment.



## Benefits

- Short mixing and discharging time
- Exceptional anti-wear design features
- High homogeneity and reproducibility of batches
- Robust design ensuring low maintenance and extended durability
- Specific application know-how backed up by own testing facilities worldwide



Dust conditioning



Dried sludge



Digestate



Soil treatment



Removable anti-wear liner



Special tool arrangement



Special mixing tools



Anti-wear tool coating and chamber lining

## Main Applications

- Treatment and conditioning of dusts and ashes
- Soil treatment
- Sludge and slurry treatment
- Treatment of various residual materials
- Treatment of contaminated materials
- Recycling materials
- Biomass homogenisation and treatment
- Treatment of powders and residues from power stations, the agro-food industry, sugarhouses, steelworks, incinerators

## Expertise – Skills – Know-how

Extensive testing in MAP®-owned laboratories all over the world and vast field applications are the foundation of specific process competence gained on the job. MAP®'s solutions in the field of Environmental Technology ensure durability of mixing vessels and tools, compliance with international quality and safety standards, as well as professional after-sales service.

MAP® is the ideal choice to match market needs in terms of quality, price, maintenance, safety and environmental protection. All MAP® machines are produced from tried and tested standard components.

The main focus of MAP® is on offering industrially manufactured top quality products at an attractive price. WAMGROUP®'s worldwide sales and service network guarantees professional and competent advice on the spot, as well as smooth order management and prompt spare parts supply.



### Decades of experience



Profound knowledge of the Environmental industry enables MAP® to identify the most suitable solution for any application.

### In-house development and manufacturing



All our products are developed, tested, manufactured and installed by our own staff. Our aim is to provide comprehensive assurance in terms of quality and delivery time.

### Skilled competence



Laboratory tests prior to industrial production processes are a guarantee for optimum results.

### Committed to problem solving



We are committed to provide product specialisations, accessories, options and specific process know-how that ensure solutions tailored to the user's needs.

### Our customers are our partners



We consider our customers as our partners. Teaming up with our clients in problem solving is crucial to MAP®.

### Global service network



WAMGROUP®'s global distribution network offers every MAP® customer professional advice, smooth order management and a 'round the clock' spares service.

## WAH



- Continuous Ploughshare Mixers
- Capacity from 2 to 1,000 m³/h

## DUSTFIX®



- Dust Conditioners
- Capacity from 1 to 80 m³/h

## WBH



- Batch-Type Ploughshare Mixers
- Capacity from 20 to 20,000 litres per batch
- Option: bomb-bay discharge door

## MESC



- Continuous Twin-Shaft Paddle Mixers
- Capacity from 3 to 80 m³/h

## MLH



- Laboratory Mixers
- Capacity from 2 to 50 litres

[mixer.wamgroup.com](http://mixer.wamgroup.com)

# Environmental Technology