

Sludge Thickeners ISP



SAVI



SAVECOTM
Member of WAMGROUP®

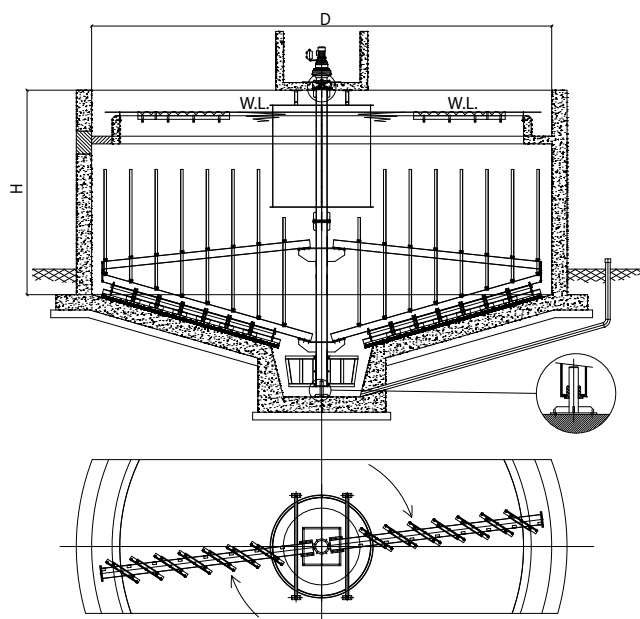
HIGHLY EFFICIENT SLUDGE THICKENING FROM SETTLING TANKS

ISP Sludge Thickeners are used to thicken sludge from settling tanks in both municipal and industrial waste water treatment plants.

The ISP Sludge Thickener increases the concentration of the sludge due to its slow moving arms and vertical pickets. This also enables the release of gas bubbles and aggregation of flakes of sludge. The system is installed inside a circular tank with a walkway made of concrete. It is mainly composed of a central drive shaft made of steel complete with flanges for connection to a movable trellis and to the scraper blades of the sludge drain well. Movable trellis are equipped with vertical pickets and bottom scraper blades. The central cylinder is used for the sewage intake; it is anchored to the concrete walkway.

The ISP Sludge Thickener is operated by a drive unit composed of an epicycloid oil bath gearbox. It is coupled to the drive shaft by means of a flange or, if the tank diameter measures more than 12 metres, by means of a central bearing.

Overall Dimensions



MODEL	TANK DIAMETER D m	TANK HEIGHT H m	INSTALLED POWER kW
ISP 4	4.00	as civil works	0.18
ISP 5	5.00	as civil works	0.18
ISP 6	6.00	as civil works	0.25
ISP 7	7.00	as civil works	0.25
ISP 8	8.00	as civil works	0.25
ISP 9	9.00	as civil works	0.25
ISP 10	10.00	as civil works	0.25
ISP 11	11.00	as civil works	0.25
ISP 12	12.00	as civil works	0.25
ISP 14	14.00	as civil works	0.37
ISP 16	16.00	as civil works	0.37
ISP 18	18.00	as civil works	0.37

Benefits

- ✓ Quick installation
- ✓ High efficiency in moisture content reduction
- ✓ Easy installation even in existing tanks

Technical Features

- Available for tanks up to 18m in diameter
- Central bearing for units larger than 12m in diameter
- Hot dip-galvanised carbon steel / 304 L / 316 L SS



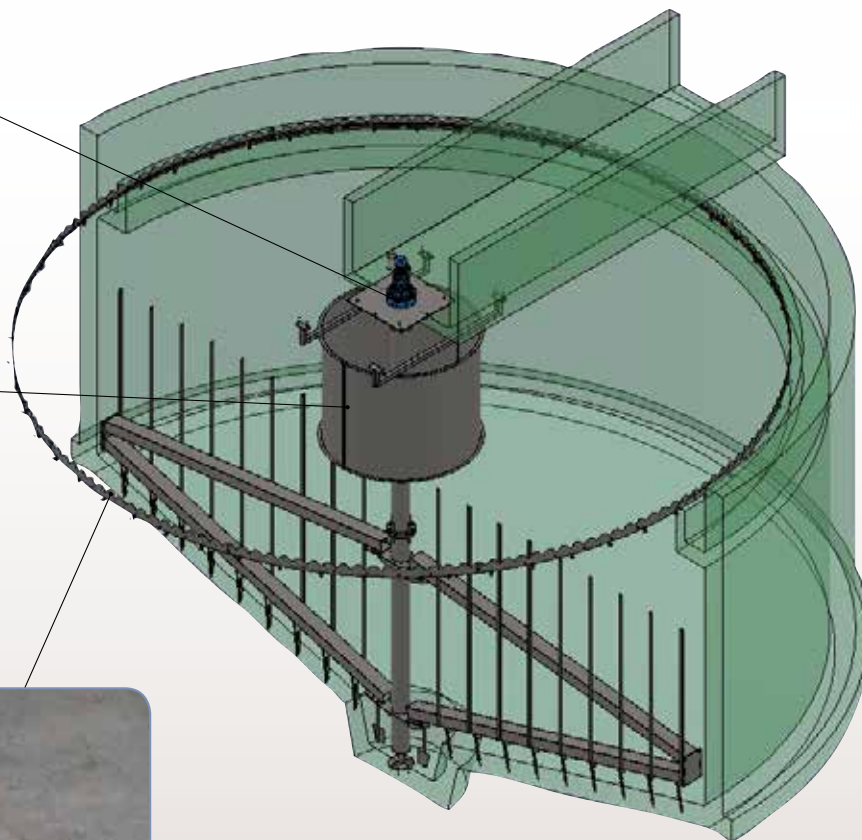
Drive Unit



Central Drum



Weirs



Accessories

- Electric torque limit switch
- Scum removal device
- Walkway manufactured from hot dip-galvanised carbon steel / 304 L / 316 L SS

Application



203001294 April 2018 Rights reserved to modify technical specifications.

This brochure has been edited for distribution in European Union countries



SAVECO™
Member of WAMGROUP®



www.saveco-water.com